



Shark S250

SAFETY & OPERATORS MANUAL

CAUTION: Read the instruction manual before using.



SHARK CONCRETE GRINDERS



Table of Contents

Specifications	Page 3
Safety Instructions	Page 4
Operating Instructions	Page 5 & 6
Parts Diagram - Main	Page 7
Parts Diagram - Coupling	Page 8
Wiring Diagram	Page 9
Overload Protector	Page 10
Handle Positions	Page 11
Level Adjustment	page 12
Angle Adjustment	Page 13
Problem Solving	Page 14
Maintenance	Page 14

SHARK CONCRETE GRINDERS

Specifications

Voltage	220-240V Single Phase, 10A
Power	2.2KW, 3HP
Working width	250mm
Weight	65kg
Rotating speed	1250rpm

SHARK CONCRETE GRINDERS

Safety Instructions

1. Read and understand the instructions on the machine and in this manual or engine manual (if applicable). Different models may have different parts and controls.
2. Equipment should only be operated by trained personnel, in good physical condition and mental health (not fatigued). The operator and maintenance personnel must be physically able to handle the bulk weight and power of this machine.
3. This is a one person machine. Maintain a safe operating distance to other personnel. Remember - one machine, one operator.
4. For operator and others safety consideration, dust masks should be used at all times. When dry polishing or grinding, the machine must be equipped with a dust extractor. This machine is intended for use on floor surfaces only.
5. Never start or run the machine with the handle folded or when the disks are not in contact with the surface.
6. The operating arm has different functions that will be introduced by later in this manual.
7. Ensure parts have stopped moving and disconnect power when servicing or changing diamond blades and accessories.
8. Do not lend or rent the machine without the operating instructions for the machine.
9. Wear clothing suitable for the job and for the work place including: safety shoes, hard hat, hearing protection, non-fogging vented safety goggles, and a suitable dust mask.
10. Keep body parts and any loose clothing away from moving parts. Failure to comply could result in bodily harm.
11. Do not modify the S250 in any way. Only use genuine Shark S250 parts and accessories.
12. Never operate the machine in rain or if heavy moisture is present.
13. Never start or run the machine when unattended.
14. Repairs should be performed by qualified persons only.
15. Do not operate the Shark S250 with any covers or doors removed or open.
16. The Shark S250 can produce sound pressure levels greater than 85db. The operator must wear approved safety ear protection.
17. Do not allow the power lead to come in contact with the cutting head or other moving parts of this machine.

SHARK CONCRETE GRINDERS

Operating Instructions

1. Wear safety clothes suitable for the job and for the work place including; safety shoes, hard hat, hearing protection, non-fogging vented safety goggles, and a dust respirator suitable for fine dust.
2. Make sure you have checked the machine before using. Ensure there is no oil leakage, water leakage or electric leakage from the machine.
3. Be sure all equipment is tested and tagged prior to use on any job. Ensure the machine is not in the wet and all switches are in good condition.
4. Inspect the entire working area before grinding and remove any bolts or concrete nails etc. that could damage the diamond tooling or machine and cause a hazardous situation.
5. Ensure there are no obstacles or existing structures that could present a hazard to the operator. If so, take the necessary action to eliminate the hazard.
6. Ensure there is enough lighting equipment in the work site.
7. Double check the machines working voltage before plugging in. The machines HZ is to strictly confirm to input voltage (warranty is void if input power source is not suitable for the machines working voltage)
8. Connect the machine to a suitable power outlet. Only use heavy duty power leads suitable for high current use (minimum 2.5mm² cable), no longer than 20 meters.
9. If no power is available within the specified distance, have a qualified person install a suitable power outlet closer to your work. Alternatively use 4mm² cable for 20 meters up to 50 meters.
10. Connect a suitable dust extractor to the machine via a 50mm flexible hose. The machine is designed to take standard 50mm hose ends for the connection of dust extractors.
11. Stay away from water and dangerous cargos to prevent personal injury, machine and property loss.
12. To change the Disk; Fold the handle into the tooling mode (see Handle Positions) and lock in place using the locking lever, then tilt the machine back so that the handle is resting on the floor.
13. The blade is removed by pushing the lock button located on the right side of the machine on the stainless steel shroud, shown on following page. (Do not engage this button when shaft is still rotating).
14. Ensure the machine is on a level surface and handle is not folded (see Handle Positions).

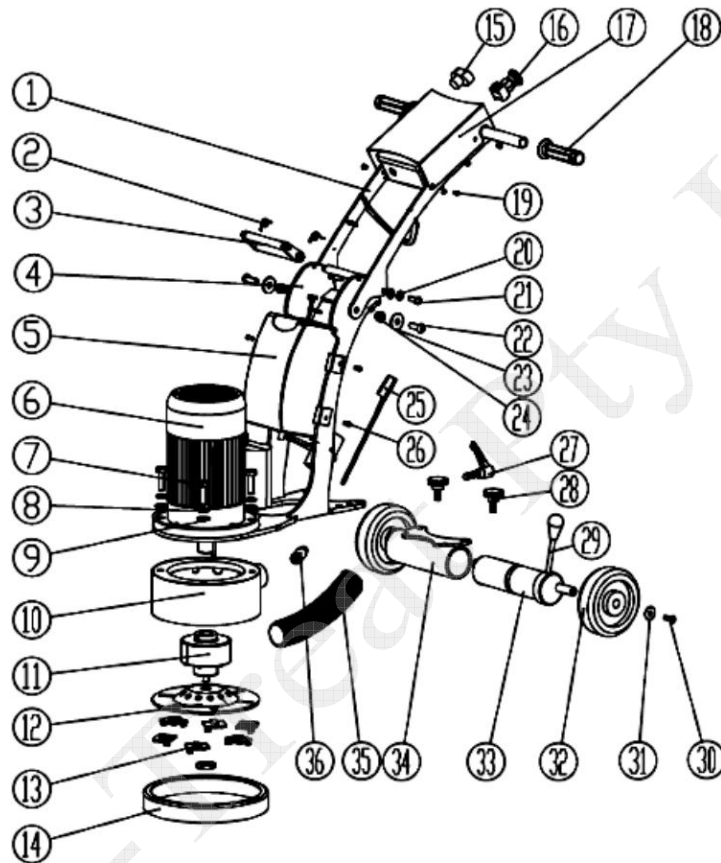
SHARK CONCRETE GRINDERS

Operating Instructions

15. Hold the handles firmly and switch the machine on by pushing the green button.
16. If the over-current device trips it indicates a problem. (Under size power lead or poor power to GPO outlet). Refer above for recommendations on power leads. Rectify problem or decrease load on grinder by using tooling with more surface area. Continuing to use the SHARK S250 when constant tripping occurs, **VOIDS THE WARRANTY!**
17. Do not attempt to make any adjustments while the machine is in operation. Any adjustments must only be performed when machine is stopped and power disconnected.
18. In the event of the machine pulling to one side all the time; adjust the axle height to obtain the best result. (See Axle Height adjustment).
19. Diamond change - Adjust and hold the handle bar, step on the pedal bracket while tilting the machine back on the ground.
20. Install suitable diamond abrasives to prevent human injury.
21. Pull down the plate on the ground after diamond installation and adjust the handle bar to a suitable position.
22. Stop machine and check the diamond abrasion after grinding for several minutes. This step is to make sure to choose the right abrasives and save cost.
23. Use only genuine Shark S250 tooling. Failure to comply could result in bodily injury and void warranty.
24. Keep machine clear of drainage pits and grates or any such hazard. Failure to comply could result in bodily injury and or could damage the machine or property.
25. This machine is designed to operate with the wheels in contact with the floor at all times. Do not operate with wheels off the floor.
26. Connect to the dust extractor and switch on.
27. After a few minutes of grinding check the wear of the diamond tooling. This will pay handsomely if the diamonds are wearing out fast due to soft concrete/abrasive concrete. Shark has a wide range of diamonds to suit every need. Please contact your supplier.

SHARK CONCRETE GRINDERS

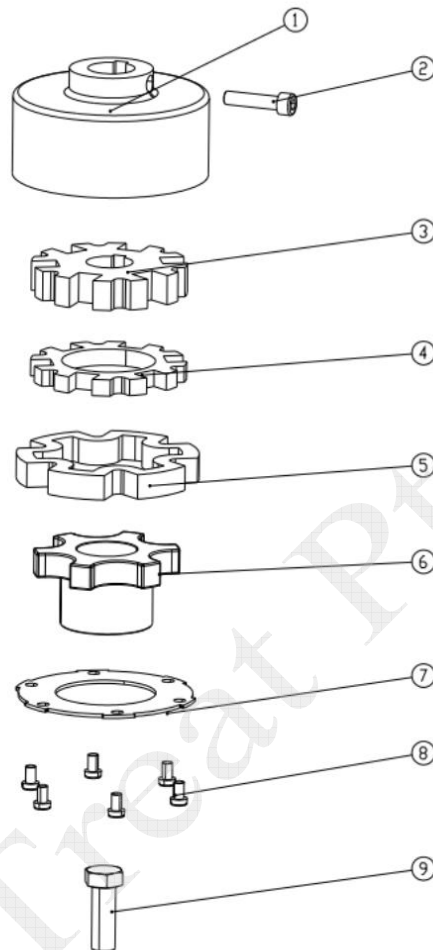
Parts Diagram - Main



Item	Code	Name	Quantity	Item	Code	Name	Quantity
18	XYMS013	S250 platinum cover	1	36	XYMS017	Stuck device	1
17	standard part	Emergency stop switch	1	35	standard part	50mm sweep-up pipe	1
16	standard part	Start switch	1	34	XYMS016	Axle tube with bracket	1
15	XYMS012	Hexagon bolt	1	33	XYMS015	Axle	
14	XYMS011	Splash guard	1	32	standard part	Rubber wheel	2
13	XYMS010	Convert Blocks	6	31	standard part	10 Flat pad	2
12	XYMS009	Six heads grinding plate	1	30	standard part	M8*25 Socket head countersunk screw	2
11	XYMS008	Spider coupling	1	29	standard part	Axle lever and knob	1
10	XYMS006	Upper shroud	1	28	standard part	Cross knob M12*30	
9	standard part	12 Flat pad	4	27	standard part	Ratchet handle	1
8	standard part	12 Shock absorption spring flat pad	4	26	standard part	damping bolt	1
7	standard part	M12 outer hexagon bolt	4	25	XYMS014	tools	2
6	standard part	2.2KW/220V single phase motor	1	24	standard part	12 big Flat pad	2
5	XYMS005	Water tank	1	23	standard part	M12*30 Button head	2
4	XYMS004	Lower frame	1	22	standard part	M10*35 Button head	2
3	XYMS003	Connector position assurance	1	21	standard part	Flat pad	4
2	XYMS002	Spring of connector position assurance	2	20	standard part	M6*15 Button head	12
1	XYMS001	Upper frame	1	19	standard part	Rubber gloves	1

SHARK CONCRETE GRINDERS

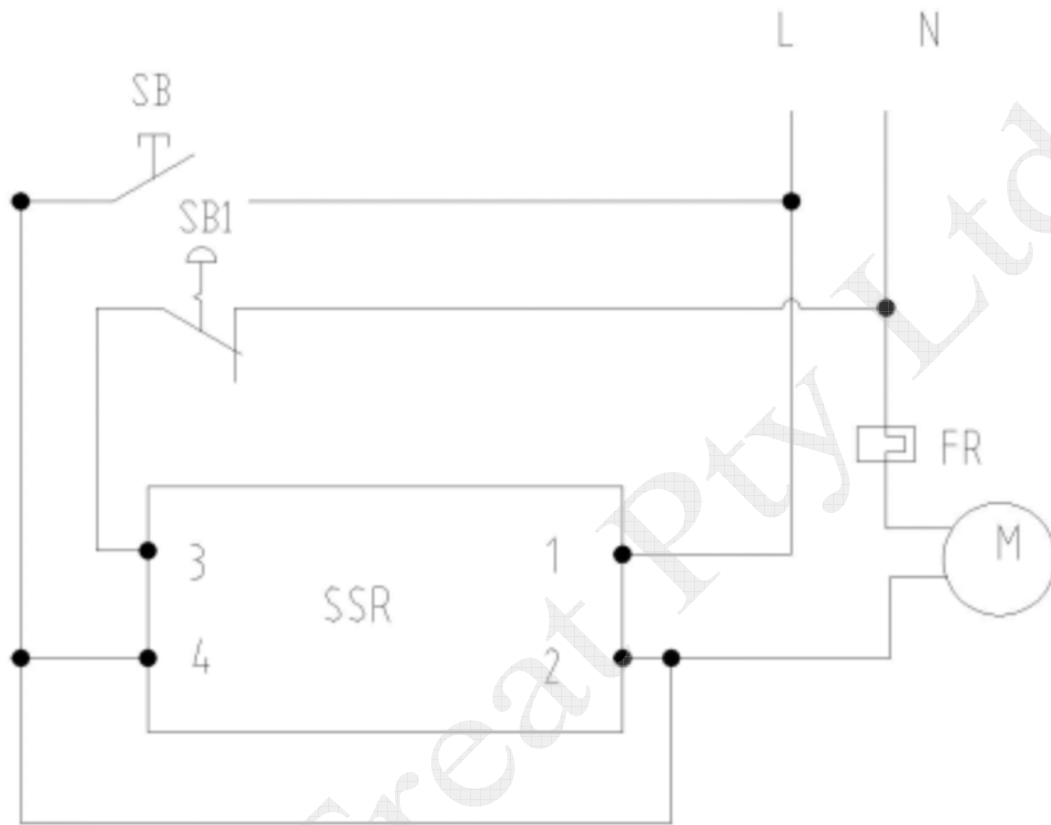
Parts Diagram - Coupling



Item	Name	Quantity
1	Damping fixed disk	1
2	M8X30	1
3	Transitional mat	1
4	Transitional mat	1
5	The output pad	1
6	The output shaft	1
7	Damping device planking	1
8	M6X20	6
9	M14X45	1

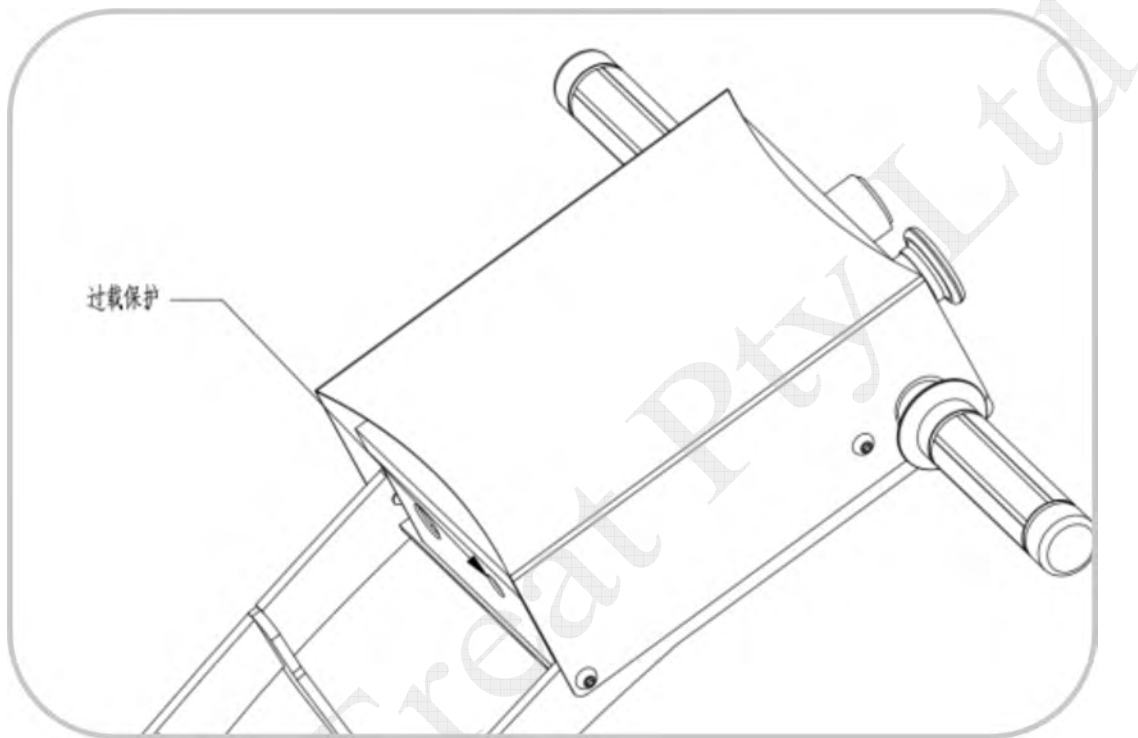
SHARK CONCRETE GRINDERS

Wiring Diagram



SHARK CONCRETE GRINDERS

Overload Protector



The S250 is equipped with an overload protection device.

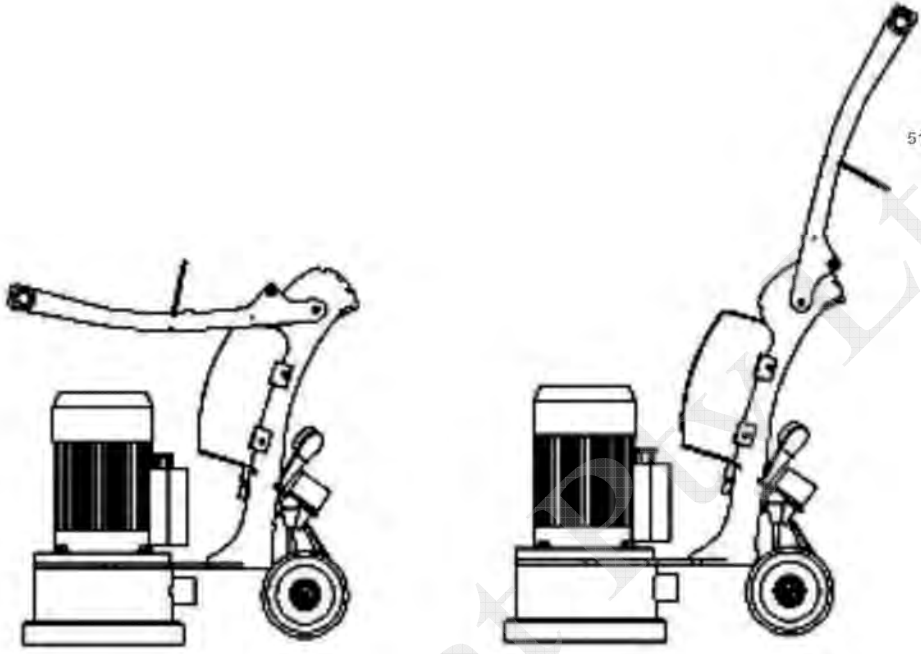
When low voltage is detected or an over current, the machine will power off automatically. When this happens please press the overload button to reset the overload protector.

If it happens again discontinue use and check the power source or leads.

Refer to the trouble shooting section

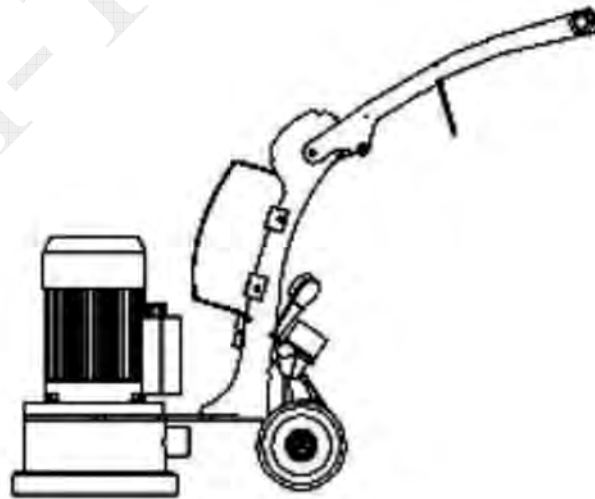
SHARK CONCRETE GRINDERS

Handle Position



1. Storage and lifting mode

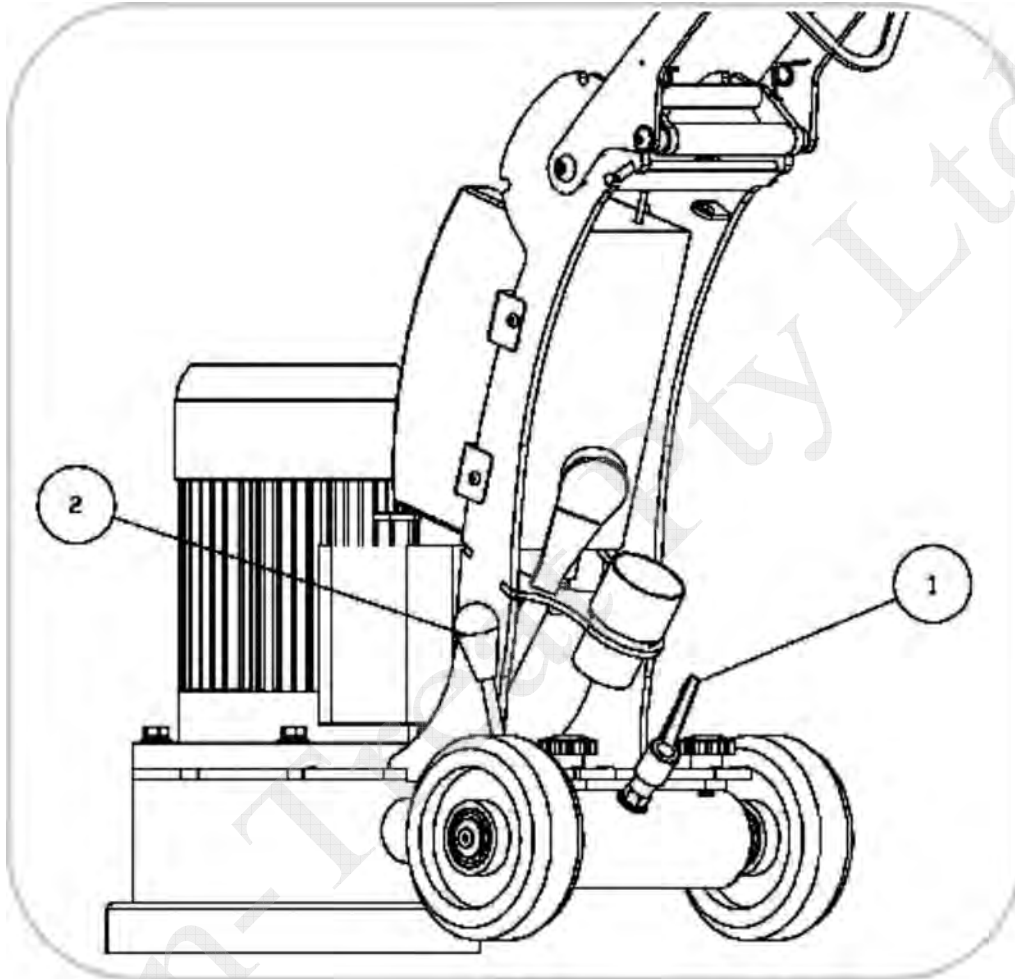
2. Tooling mode



3. Operating mode

SHARK CONCRETE GRINDERS

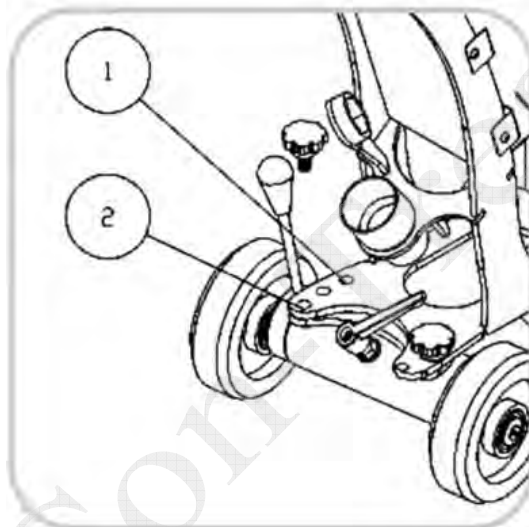
Level Adjustment



1. Loosen the axle fixed handle (Fig. 1 position).
2. Use the wheels horizontal lever (Fig.2) to adjust the level of the machine.
Refer to the level bubble for the correct middle position.
3. Lock the axle fixed handle (Fig.1) after the machines level has been adjusted.

SHARK CONCRETE GRINDERS

Angle Adjustment



- 1.Replacing the dust cover.
- 2.Loosen the angle fixing screws
- 3.Adjust the axle angle, when the wall on the right side of the machine the wheel shaft angle fixing screws in the figure No. 1 hole. On the left of the machine is fixed to the No. 2 hole.

SHARK CONCRETE GRINDERS

Problem Solving

problem	Cause	Treatment
Machine can not run	Wrong power	Check the rated voltage of the power supply
		Check whether the overload protector trip or not
Suddenly stopped running when the machine is running	Motor overload	Check whether the overload protector trip or not check the wire is it to long than 20m or wire model only 2.5mm ² . 1.Please change the wire less than 20M. 2.Use wire standard more than 4mm ²
Machine shake serious	Incorrect horizontal axle	Check if the horizontal axle have been proofread
	Incorrect Abrasive install	Check whether the abrasive have been fixed, change to the same height and size of abrasives
	Aging shock absorber	Check the rubber ring inside the shock absorber is aging or not.
Machine severe bias	Incorrect horizontal axle	Check if the horizontal axle have been Proofread
	Incorrect abrasive install	Check whether the abrasive have been fixed, change to the same height and size of abrasives

Maintenance

After daily use, all equipment should be routinely cleaned. Check and clean the waterproof cover and overall machine parts. Cleaning the build up of slurry on the disc, will help to improve the efficiency for the next use.

After using the water tank frequently, clean the tank every other week to avoid the water filter from becoming clogged by sediment.

After completion of a project, conduct a routine inspection of the machine. Check and fasten all screws and check the screws on the bottom of cushion to ensure they haven't become loose. Conduct an inspection of the rubber ring on the shock absorbers device to ensure there is no signs of damage or wear.